



35 Vista Street, Greenwich



## Deposit taken and Open home cancelled

Offer accepted ! Contact Kandi for more information.

This pristine, six-bedroom, seven-bathroom home in the stylish and well-established suburb of Greenwich has recently been completed with no expense spared, and is ready for its first occupants.

Inside, the state-of-the-art kitchen is equipped with a gas cooktop and adjoining with an internal laundry. The master suite includes huge walk-in robes, while all other rooms feature built-ins and ensuite bathrooms. Sitting across three levels, the home has ample space and could easily be occupied by three generations of family members.

Complete with ducted air-conditioning, ceiling fans and timber floorboards, the light-filled property sits on an elevated, 650-square-metre block that backs directly onto

 6  7  2  655 m2

Price	Deposit taken
Property Type	Rental
Property ID	3
Land Area	655 m2

### Agent Details

Kandi Chang - 61450175486

### Office Details

Maestro Property  
Level 3 828 Pacific Hwy  
Gordon, NSW, 2072 Australia  
61450175486



the Harbour Foreshore at Holloway Park. With a 1.8 metre-deep plunge pool, a separate media room and a private gym, this home offers total luxury and convenience.

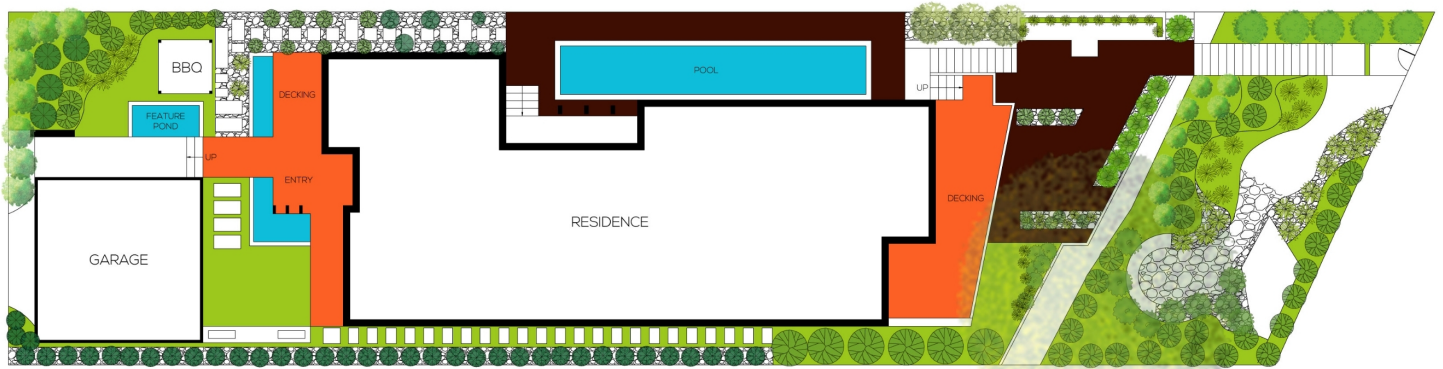
Move into this beautifully appointed home and enjoy uninterrupted views of the city skyline and Harbour Bridge from every level.

- Brand new, never been lived in
- 6 bedrooms with ensuites
- Additional guest bathroom
- 2 car spaces (access from Vista Lane)
- Plunge pool
- Additional Media and Gymnasium room
- Indoor fireplace
- Ample street parking
- Private front yard that adjoins foreshore parkland
- Only 1km from Greenwich ferry wharf
- 200 metres to the nearest bus stop
- Approx. 400m walk to village boutique shops, supermarket and cafes
- Approx. 400m walk to Greenwich Primary school (K-1 campus)

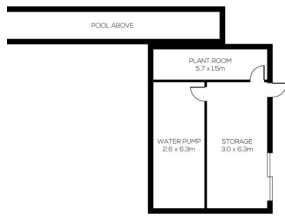
This home has the advantage of being close to everything while feeling completely secluded and private.

Don't miss your opportunity to live in one of Sydney's most sought-after postcodes. Contact Kandi today!

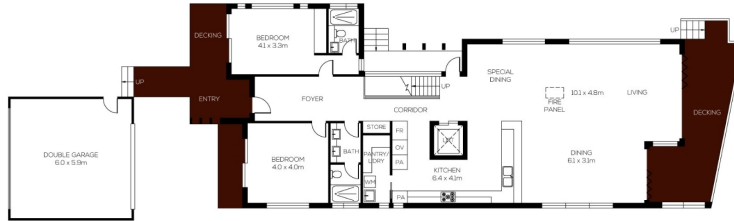
The above information provided has been furnished to us by the vendor/s. We have not verified whether or not that information is accurate and do not have any belief in one way or the other in its accuracy. We do not accept any responsibility to any person for its accuracy and do no more than pass it on. All interested parties should make and rely upon their own inquiries in order to determine whether or not this information is in fact accurate.



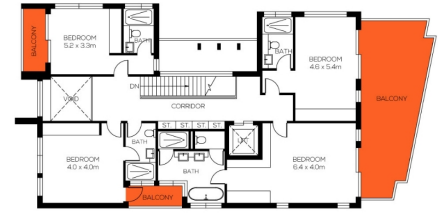
Site Plan



Lower Level



Main Level



Upper Level



Site area 655m2 approx.



0 1 2 3

Scale in metres, indicative only. Dimensions are approximate. All information contained here in gathered from sources we believe to be reliable. However we cannot guarantee its accuracy and interested persons should rely on their own enquiries.

35 Vista Street, Greenwich